

I'M SO EXCITED

MUSIK & TEXT : JUNE, ANITA & RUTH POINTER & TREVOR LAWRENCE

ARR.: STEWART BURGESS

BASS

1 ♩ = 185

LAST TIME ONLY VAMP 3

11

19 VOCALS

27

35 A_{mi}^7 (BRIDGE) G_{mi}^7 D_{mi} A_{mi}^7

G_{mi}^7 43 C_{mi} D_{mi} F

The image shows a bass line musical score for the song 'I'm So Excited'. It consists of ten staves of music. The first staff is the beginning, marked with a tempo of 1 ♩ = 185. It starts with a double bar line and a key signature change to one flat. The first measure is a whole rest. The second measure has a quarter note G2, quarter note F2, quarter note E2, quarter note D2. The third measure has a quarter note C2, quarter note B1, quarter note A1, quarter note G1. The fourth measure has a quarter note F1, quarter note E1, quarter note D1, quarter note C1. The fifth measure has a quarter note B0, quarter note A0, quarter note G0, quarter note F0. The sixth measure has a quarter note E0, quarter note D0, quarter note C0, quarter note B0. The seventh measure has a quarter note A0, quarter note G0, quarter note F0, quarter note E0. The eighth measure has a quarter note D0, quarter note C0, quarter note B0, quarter note A0. The ninth measure has a quarter note G0, quarter note F0, quarter note E0, quarter note D0. The tenth measure has a quarter note C0, quarter note B0, quarter note A0, quarter note G0. The first staff ends with a double bar line and a repeat sign. The second staff continues the bass line with similar rhythmic patterns. The third staff starts at measure 11. The fourth staff starts at measure 19, labeled 'VOCALS'. The fifth staff starts at measure 27. The sixth staff starts at measure 35, labeled 'BRIDGE'. The seventh staff continues the bridge. The eighth staff starts at measure 43. The ninth staff continues the bridge. The tenth staff ends with a double bar line and a key signature change to one sharp.

"I'M SO EXCITED" - BASS - 2

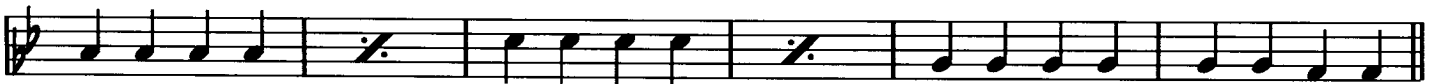
47 (CHORUS)



55



63



71



79



87



"I'M SO EXCITED" - BASS - 5

95 **Gmi7** **PIANO-SOLO** **Cmi7** **E^b**

B^b 103 **Gmi7** **Cmi7**

E^b **B^b**

111 **Ami7** (BRIDGE) **Gmi7** **Dmi** **Ami7**

Gmi7 119 **Cmi** **Dmi** **F**

123 (CHORUS) 128

131

139 **DRUMS & PERC.-SOLO**

"I'M SO EXCITED" - BASS - 4

6 147

155

163 Gmi Eb F

Gmi 171 Gmi Eb

Eb F Gmi 179 Gmi

Eb F Gmi

187 Gmi Eb Eb F Gmi